



# VALENCIA™

Lotus

107-2113

13-1504 TPX

New



**Lotus**

107-2113  
13-1504 TPX

New



**Petrol**

107-5065  
18-4214 TPX

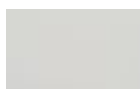
New



**Ultra Violet**

107-2118  
18-3838 TPX

New



**Pure white**

107-9607  
11-4800 TPX

New



**Chestnut**

107-2115  
19-1230 TPX

New



**Tomato**

107-2112  
18-1564 TPX

New



**Avocado**

107-2110  
16-0540 TPX

New



**Night**

107-2108  
19-4110 TPX

New



**Coral**

107-2106  
15-4309 TPX

New



**Teal**

107-2119  
19-4517 TPX

New



**Warm Grey**

107-4044  
16-0205 TPX

New



**Cashmere**

107-2117  
16-1334 TPX

New



**Camel**

107-2116  
16-1144 TPX

New



**Rosé**

107-2114  
14-1508 TPX

New



**Squash**

107-2111  
14-0846 TPX

New



**Citrus**

107-2109  
14-0627 TPX

New



**Skylight**

107-2107  
14-4210 TPX

**Sonne**

107-2020  
13-0755 TPX



**Safran**  
107-6012  
15-1054 TPX



**Orange**  
107-6019  
16-1260 TPX



**Terracotta**  
107-0035  
17-1340 TPX



**Praliné**  
107-0001  
19-1015 TPX



**Sumatra**  
107-9001  
18-1018 TPX



**Taupe**  
107-0034  
17-1310 TPX



**Champagne**  
107-1001  
16-1324-TPX



**Leinen**  
107-1049  
14-1107 TPX



**Weiss**  
107-8032  
13-0905 TPX



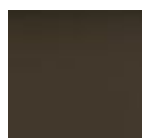
**Perle**  
107-4045  
17-5102 TPX



**Lichtgrau**  
107-4052  
18-0510 TPX



**Schwarz**  
107-9035  
19-0000 TPX



**Moss**  
107-5002  
18-0513 TPX



**Melone**  
107-6013  
15-1237 TPX



**Nectarine**  
107-6003  
18-1354 TPX



**Buche**  
107-0033  
19-1217 TPX



**Bronze**  
107-6002  
18-1016 TPX



**Mushroom**  
107-4001  
17-1118 TPX



**Cognac**  
107-0002  
18-933 TPX



**Beige**  
107-1050  
16-1010 TPX



**Sisal**  
107-1048  
14-1107 TPX



**Auster**  
107-4040  
14-4002 TPX



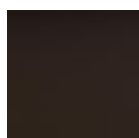
**Platin**  
107-4043  
18-4005 TPX



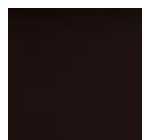
**Graphite**  
107-4003  
19-3906 TPX



**Laurel**  
107-4002  
17-0510 TPX



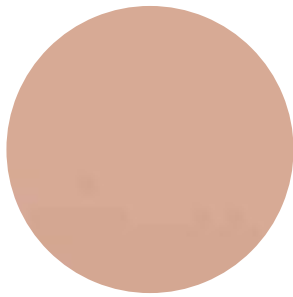
**Meteor**  
107-4041  
19-0810 TPX

**Mocca**107-0020  
19-1314 TPX**Port**107-2062  
19-1532 TPX**Rot**107-2075  
18-1655 TPX**Berry**107-2002  
19-2432 TPX**Titan**107-4042  
18-4215 TPX**Baltic**107-3069  
18-4032 TPX**Marine**107-3068  
19-3920 TPX**Jade**107-5056  
16-5422 TPX**Olive**107-5001  
18-0332 TPX**Silver**107-4020  
MET 14-5002 TPX**Ivory**107-1020  
13-0401 TPX**Merlot**107-2001  
19-1525 TPX**Kirsche**107-2074  
18-1658 TPX**Pink**107-2021  
17-2227 TPX**Amethyst**107-7001  
19-3220 TPX**Lavendel**107-3001  
17-3923 TPX**Delft**107-3067  
19-4044 TPX**Türkis**107-5057  
17-5421 TPX**Apfel**107-5041  
16-0237 TPX**Grün**107-5069  
19-5513 TPX**Gold**107-6020  
17-1012 TPX**Pearlescence**107-8020  
11-4301 TPX

*The colour samples are indicative and not intended as an exact replica of the actual colour of the product. Due to variations in monitor settings and*

*colour balances, colours are representative only and should not be construed as an exact colour match of the listed product. We advise you to*

*request actual material samples before ordering.*



TEXTURE DETAIL:  
Scale: 1:3

## TECHNICAL SPECIFICATIONS

### SECTOR

#### AUTOMOTIVE

- ✓ Caravans & RV
- ✓ General Automotive
- ✓ Mass Transportation
- Motorcycles

#### CONTRACT

- ✓ Healthcare
- ✓ Hospitality
- ✓ Office
- Outdoor
- ✓ Public Spaces
- ✓ Residential

#### MARINE

- Marine Exteriors
- ✓ Marine Interiors

### DESIGN:

Faux Leathers

### COMPOSITION:

Vinyl / Urethane Topcoat

### BACKING

Hi-Loft<sup>2</sup>™

### PROTECTIVE FINISHES

**PERMABLOK<sup>3</sup>®**  
ADVANCED VINYL PROTECTION

### WIDTH:

137.00 cm

**ROLL LENGTH:**

30.00 m

**WEIGHT:**

650.00 gr/m2

## FLAME RETARDANCY <sup>1</sup>

- ☐ EU: EN 1021 Part 1 & 2
- ☐ ES: UNE 23.727-90 1R/M.2
- ☐ FR: NF P 92-503/M2
- ☐ DE: DIN 4102 B2
- ☐ IT: UNI 9175 (1987) / UNI 9175/FA1 (1994) Classe 1.IM (UNO I EMME)
- ☐ AT: ÖNORM B 3825, Gruppe 1 - Schwerbrennbares Verhalten
- ☐ AT: ÖNORM A 3800 Teil 1, Qualmbildungsklasse Q1 - schwachqualmend
- ☐ IMO FTP 2010 Code MSC.307 (88) Part 8 3.1 & 3.2
- ☐ US: FMVSS 302
- ☐ US: FAR 25/853
- ☐ (MED) Marine Equipment Directive (in its current valid version)
- ☐ ECE R118.02 (replaces Directive 95/28/CE) Annexes 6, 7 & 8
- ☐ EN 71-2:2006+A1:2007 - Safety of Toys - Parte 2: Flammability

## FINISHES AND TREATMENTS

- ☐ PERMABLOK3®
- ☐ Anti-stain Finish
- ☐ >300.000 cycles Martindale (EN ISO 12947:1999 Part 2)
- ☐ Cold Crack -23°C
- ☐ Mildew resistant backing and face
- ☐ UV-Resistance XENOTEST DIN 54004/ NTC 1479
- ☐ EN 71-3 Safety of Toys (Migration of certain elements)
- ☐ Sulfide Stain Resistant
- ☐ Anti-static Finish

<sup>1</sup> This term and any corresponding data refer to the typical performance in the specific tests indicated and should not be construed to imply the behavior of this or any other material under actual fire conditions.

# TERMS AND CONDITIONS OF PRODUCT

## TERMS AND CONDITIONS OF PRODUCT ✓

**SPRADLING® SPAIN**  
Telephone: **+34 938 655 719**  
Fax: **+34 938 627 960**  
E-mail: **info.es@spradling.eu**

**EURO SPRADLING S.L.U.**  
Carrer Garbí 3  
Polígono industrial de Llevant | Sector C  
08213 Polinyà  
Barcelona, Spain

**SPRADLING® GERMANY**  
Telephone: **+49 (0)4131 7098 4000**  
Fax: **+49 (0)4131 7098 4010**  
E-mail: **info.de@spradling.eu**

**SPRADLING INTERNATIONAL GmbH**  
Stadtkoppel 34  
D-21337  
Lüneburg, Germany

**SPRADLING® UK**  
Telephone: **+44 (0) 1235 812329**  
Fax: **+44 (0) 1235 815051**  
E-mail: **info.uk@spradling.eu**

**SPRADLING UK LTD**  
Unit 5, Moorbrook Park  
Didcot, Oxfordshire, OX11 7HP  
United Kingdom

---

**SPRADLING® USA**    Want to know more about our products in USA?

VISIT SPRADLING USA 